



纽约炉头

**RESTAURANT
EQUIPMENT**

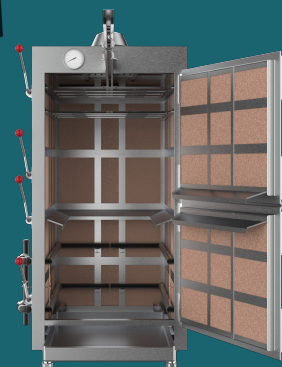
诚信品质，您的厨房设备专家

Panda®

**Unbeatable
consistency**

PANDA® Roaster Series
Multipurpose Pork Roaster Oven

GAS APPLIANCES





PANDA® Roaster Series

Multipurpose Pork Roaster Oven

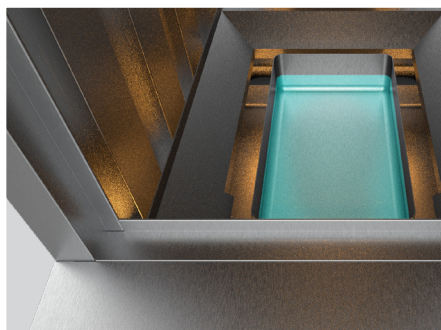
This versatile unit combines Asian and Western cooking techniques that allow you to produce the tasty meats of your choice in minimum time. With the ability to hold up to 100 lb. of ribs, 12 chickens, or 30 lb. of tenderloin, this unit is ideal for keeping up with demands in your busy commercial kitchen.

Up to 260,000 BTU Powerful Burner

Two gas burners deliver a total of 260,000 BTU of cooking power, and temperatures may be thermostatically controlled from 150 to 800 degrees Fahrenheit. Plus, a safety pilot system is included for maximum operator security.



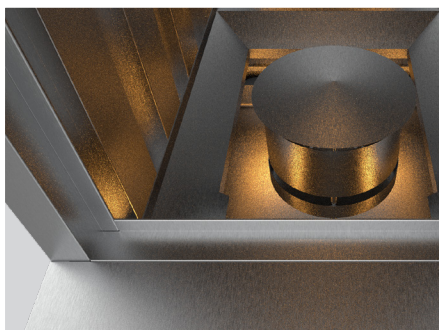
Diffrent preset for diffrent cooking need



Wet Roasting

A Water pan preset to achive crispy exterior, and tender interior.

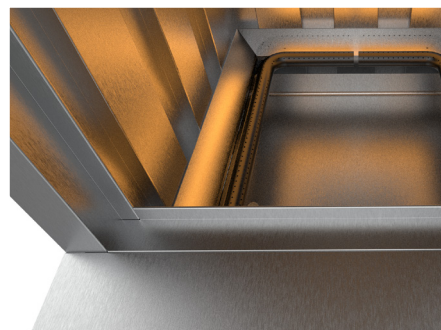
- Roast Chicken and Char Slu



Smoking

Wood chips are added to the fire to give a smoky flavor to the food.

- Smoked Salmon & Smoked Meat



Broiling

Exposing food to direct heat for a long time to create a crispy crust.

- Pekking Duck & Roasted Pork

Thermostatic Control

Thermostatic control provides accurate temperature for precise and consistence cooking time.



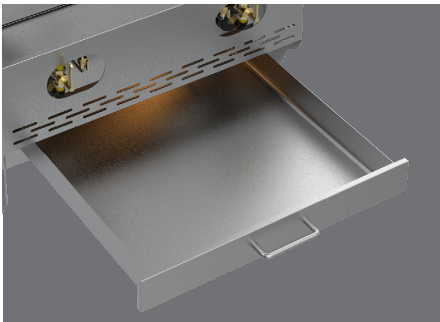
3” Thick Insulation

Full enclosed 3” thick insulation wall for energy efficiency.



Even Heat Distribution.

3 sided burner to provide consistence and even heat distribution.



Super Spacious

Upper section of roaster has five track levels to hold roads or oven racks.



Easy To Clean

Full size removable stainless steel grease pan for easy cleaning.

PANDA® Roaster Series Multipurpose Roaster Oven

Technical Specification

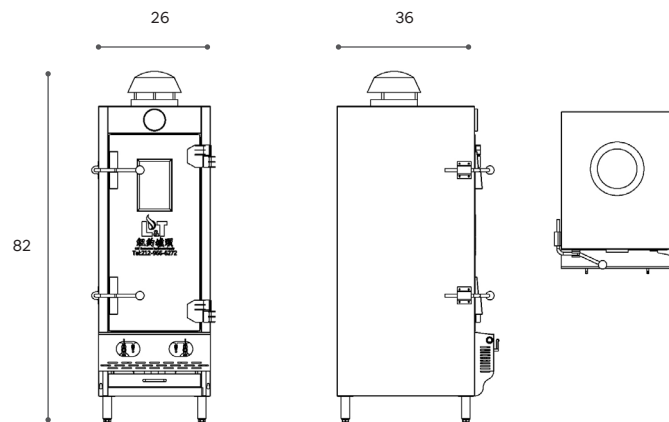
MODEL	DIMENSION (IN)			GAS INLET	TOTAL BTU/HR
	W	D	H		
SH-24 (B)	26	36	82	1 1/4	180,000
SH-30	32	36	82	1 1/4	220,000
SH-30 (B)	34	36	82	1 1/4	220,000
SH-36 (B)	38	36	82	1 1/4	260,000
1 ¼” Gas Connection					
All gas, electric, and water connection have to be installed by a professional.					



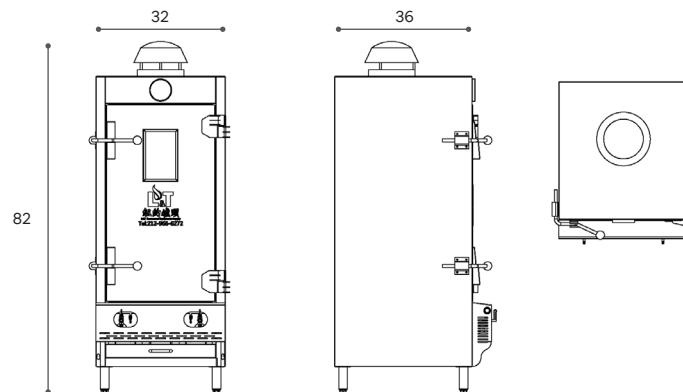
NFS
This item meets the standards imposed by NSF International, which focuses on public safety, health, and the environment.

Product Dimensions

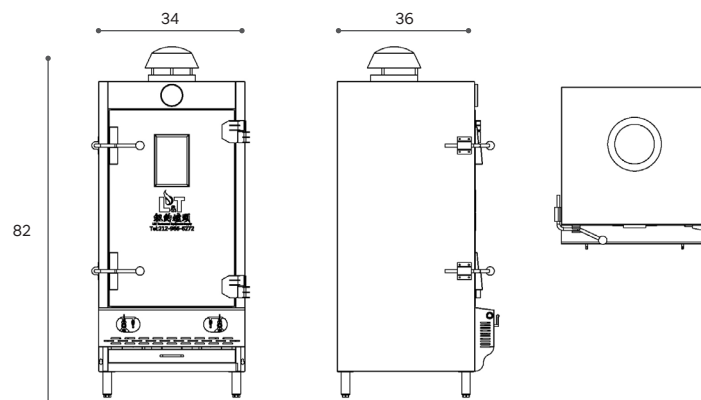
SH-24 (B)



SH-30



SH-30 (B)



SH-36 (B)

