

Electrify Everything.

PANDA® Induction Series
Induction Wok Range

ELECTRIC APPLIANCES



L&T
紐約爐頭
RESTAURANT EQUIPMENT
專業品質，您的廚房定制專家



PANDA® Induction Series Induction Wok Range



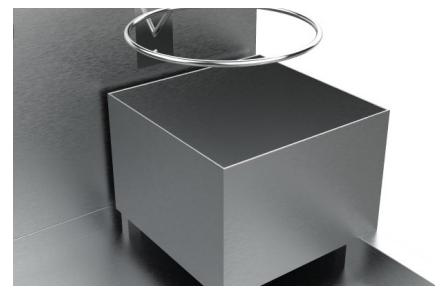
Stainless Steel Stove Top

16GA one piece stainless steel stove top extended to front and two sides with forming technology.



Environmentally Friendly

No Open Frame, No blast device, reduced heat dissipation & noise reduction



Heavy Duty Construction

Heavy gauge stainless steel frame construction for the entire unit, which is designed for extra strength and durability.



Precise Temperature Control

Advanced computer technology control enables precise cooking temperature.



Warming chambers

Small non insulated chambers for soup, stock or oil are available as an option.



Easy Operation:

One-button operation, intelligent computer control, water-proof, anti leakage, etc



Swing Faucet

swing faucet mounted on the backsplash comes standard over each wok chamber and allows for cleanup between batches of food.



Cost Effective

Reduced engineering volume and investment of air supplies, and exhaust devices. No need to invest in the cost of gas



Strainer holders

Suspend strainers from the backsplash with an optional strainer holder. Strategically placed holders allow for oil or stock to drip back into insets.

PANDA® Induction Series Grand Induction Wok Range

Technical Specification

MODEL	NUMBER OF CHAMBER	DIMENTION (IN)			WATER INLET	GAS INLET	TOTAL BTU/HR	APPROX. NET WEIGHT	APPROOX. GROSS WEIGHT
		W	D	H					
QX-X400-12	1	30	34	48	1/2	1 1/2	Varies	300lbs	400lbs
QX-X400-12-(1)	1	48	48	48	1/2	1 1/2	Varies	500lbs	750lbs
QX-X400II-12-(1)	2	72	48	48	1/2	1 1/2	Varies	750lbs	1090lbs
QX-X400II-12-(2)	2	88	48	48	1/2	1 1/2	Varies	1000lbs	1465lbs



ETL US

This item meets the electrical product safety standards imposed by the ETL, a division of the Intertek Group, for use in the United States.



ETL Sanitation

This item meets the sanitation standards imposed by the ETL, a division of the Intertek Group.

Product Dimension

